



SCULPTURE GARDEN

AT THE OVERLAND PARK ARBORETUM & BOTANICAL GARDENS



COMMITMENT TO PUBLIC ART

246-piece art collection valued at \$5.3M.

Monumental sculpture throughout the city.

Art at the Center in Tomahawk Ridge Community Center hosts art exhibits year-round.

Korean War Memorial and the 9/11 Memorial at the Fire Training Center



THE U.S.-CHINESE CULTURAL EXCHANGE SCULPTURE COLLECTION

24 pieces – valued at \$3.6M donated 2011 - 2013

On exhibit in temporary space at the Arboretum

Vision of Kwan Wu, internationally renowned sculptor and Olathe resident

Sculptures donated by artists and Chinese benefactors

International Sculpture Foundation funded shipment of the sculptures and cultural exchange activities.

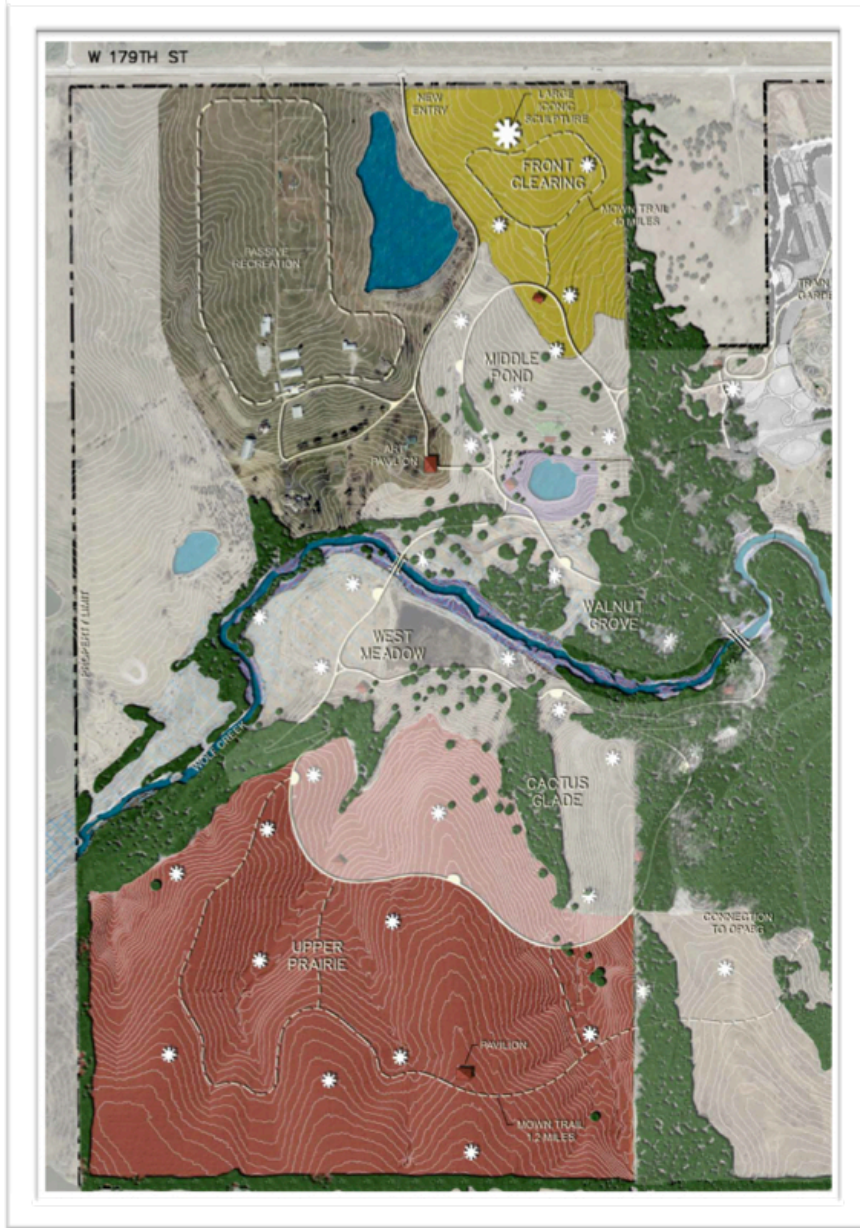


KEMPER FARM

In 2002, Crosby Kemper donated 320 acres adjacent to the Arboretum to the City of Overland Park.



SCULPTURE GARDEN MASTER PLAN



Master Plan designed by Bowman Bowman Novick and Julie Moir Messervy Design Studios

Adopted by City of Overland Park in 2013

Covers 250 of 320 acres

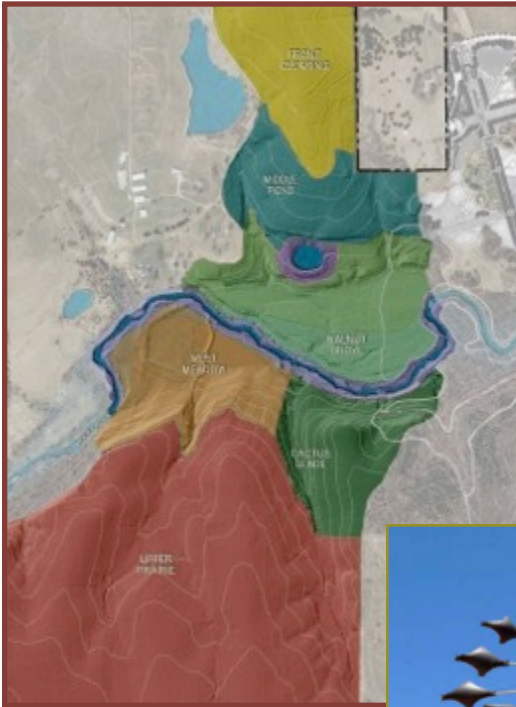
Features 7 areas where art will be exhibited according to the elements of nature.

“Working visions”

An inspirational place to experience the creative expression of global diversity and art interacting with nature.

Art of the land, not on the land.

A showcase for the artists of the world in the Kansas landscape.



The collection will be exhibited according to its relationship with the elements of nature – interpretively and literally – and complement the natural beauty of the landscape.



EARTH

WATER

AIR

FIRE

METAL

WOOD

PLANT



FUNCTION & PURPOSE

The sculpture garden will be

- *a major cultural amenity for the Greater Kansas City area*
- *a regional, national & international cultural destination*
- *a showcase for regional, national and international artists in a large unique setting*
- *the permanent home of the US-Chinese Cultural Exchange Collection*
- *a community-gathering, music & performance venue.*

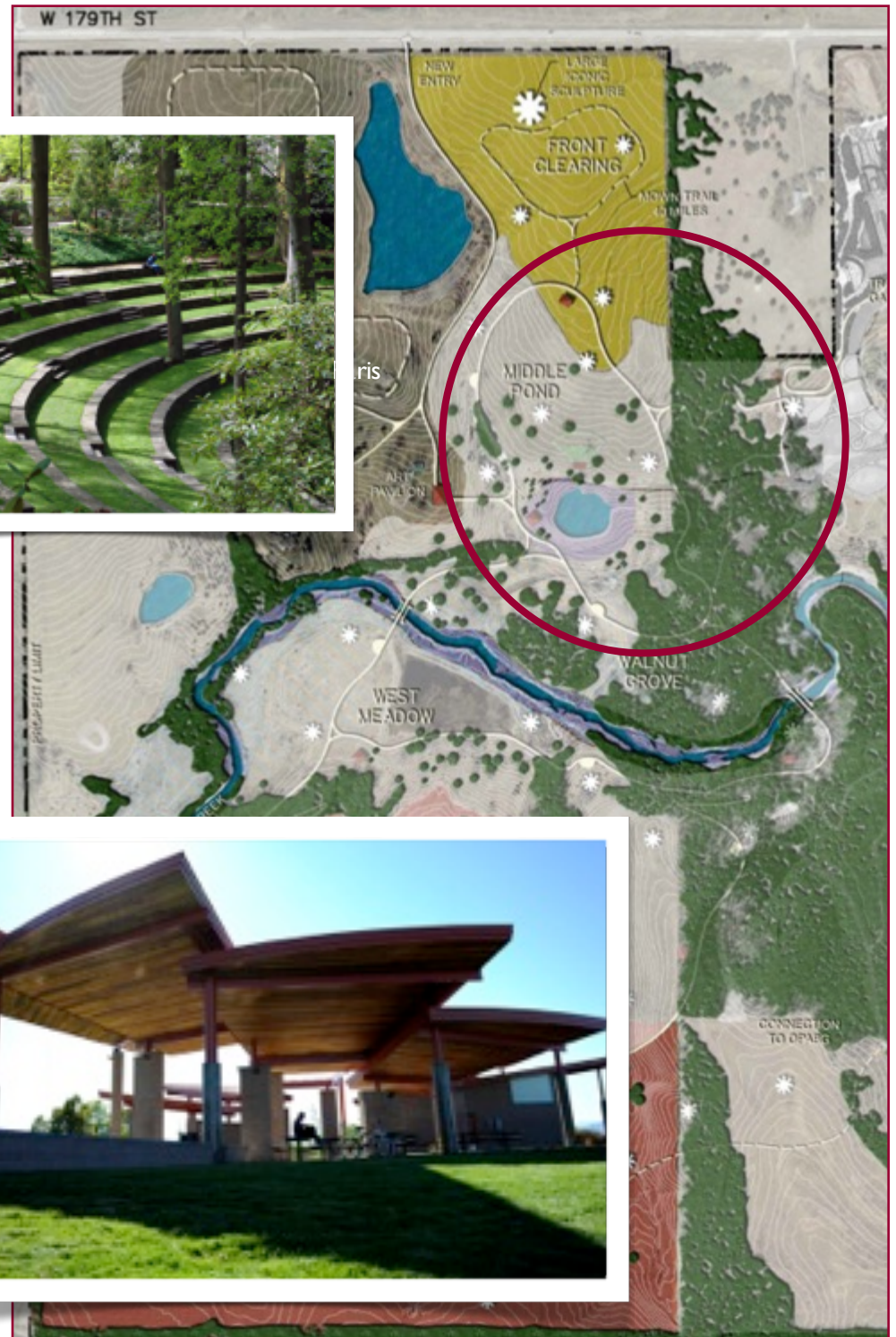
Its purpose is to

- *add to the value of the Arboretum for area residents and visitors*
- *provide economic benefit to the area as a unique destination for visitors*
- *foster cultural exchange*
- *provide educational opportunities*
- *blend artistic expression and place*
- *connect the local community to the world.*



PHASE 1

- *Entry portal*
- *.75 miles of 10' paved trails*
- *Installation of the Chinese sculpture collection*
- *2 Seating niches*
- *Open air pavilion*
- *Pond restoration*
- *Outdoor amphitheater for 800*



PHASE 2

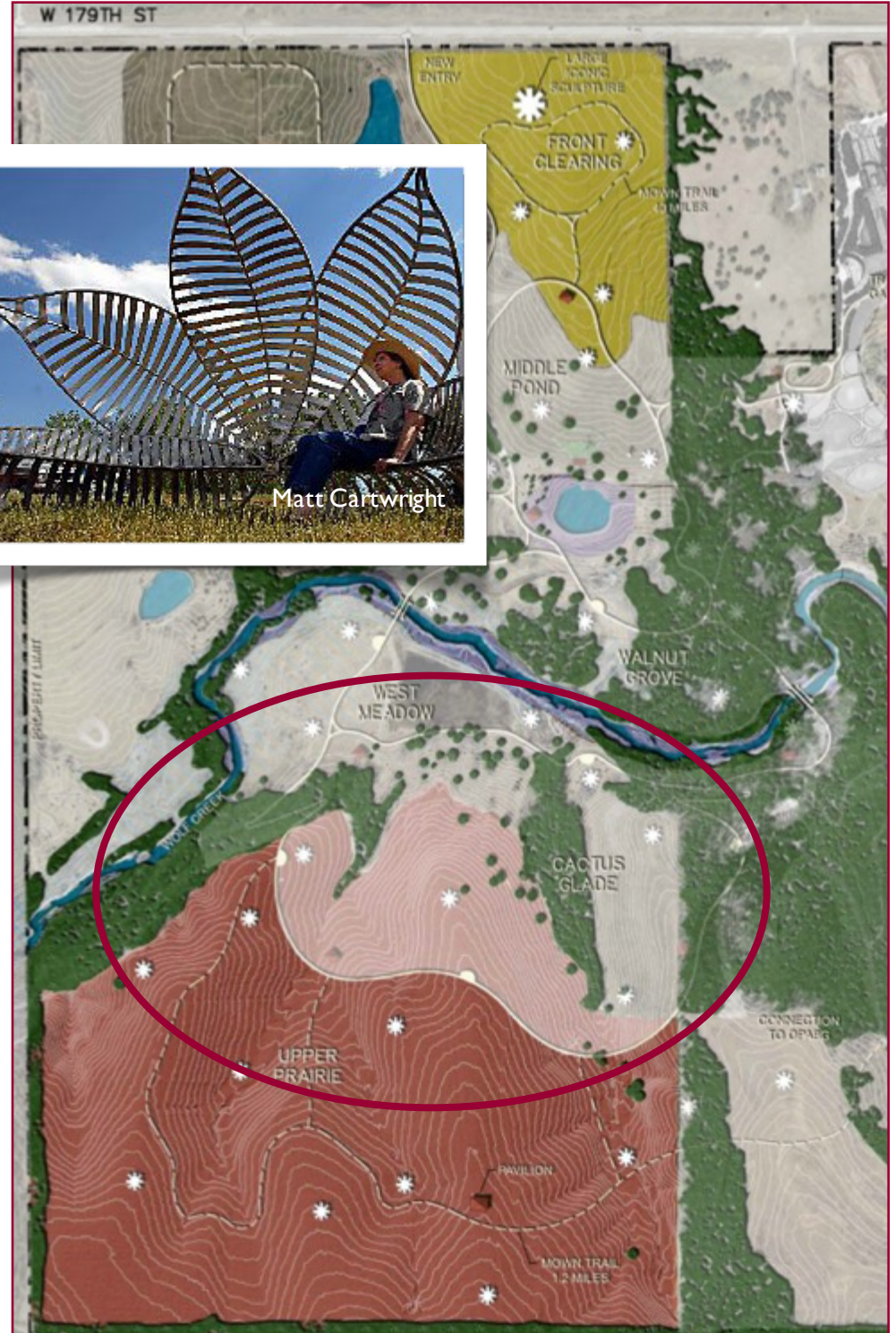
- *.75 more miles of 10' paved trails*
- *2 Bridge crossings of Wolf Creek*
- *Acquisition and installation of 5 sculptures*
- *2 Seating niches*
- *2 Open air pavilions*
- *Stream stabilization*



David Dahlquist

PHASE 3

- *.9 more miles of 10' paved trails*
- *Acquisition and installation of 5 sculptures*
- *3 Seating niches*
- *2 Open air pavilions*



PHASE 4

- *1.6 miles of mown trails*
- *Installation of 5 sculptures*
- *Open air pavilion*
- *Asphalt drive improvements*
- *Prairie restoration*
- *Art Center*
 - ▶ *Exhibition space*
 - ▶ *Studio/classroom space*
 - ▶ *Event space*
 - ▶ *Housing for Artists-in-Residence*



CURATORSHIP, OPERATIONS, MAINTENANCE

Curatorship:

- *A full-time professional curator*
- *Combination of permanent, temporary and loaned installations and be representative of art from around the world*
- *Site-specific art commissions*
- *Artists-in-Residence and arts programming in the Art Center*

Operations and maintenance:

- *Operated as part of the Arboretum*
- *Maintained by the City of Overland Park*
- *Site of events, performances, classes, conferences and special exhibitions*
- *Friends of Overland Park Arts will promote and support the sculpture garden as docents, volunteers and fundraisers and maintain a membership program.*